

THE BALLARDVALE GAZETTE

NEWSLETTER OF THE BALLARDVALE HISTORIC DISTRICT COMMISSION

Vol. 10, No. 2

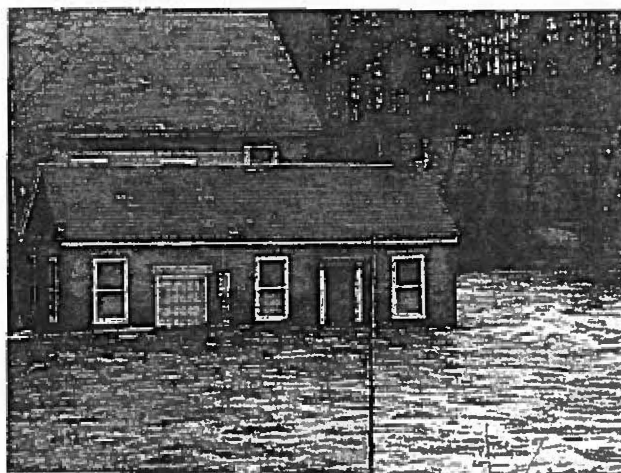
BallardVale, Massachusetts

August 2010

Water: Too Much, then Not Enough

The heavy spring rains that brought flooding to Massachusetts this past March seem long ago and far away. The photographs pictured here were taken in BallardVale center after the Shawsheen River flooded the parking lot and the many businesses and homes located along its banks.

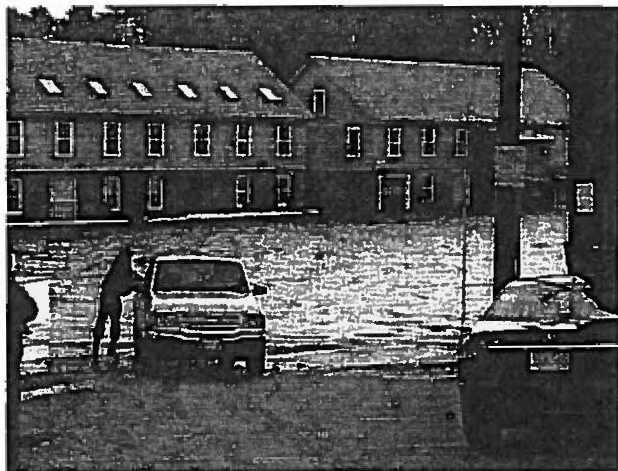
A mere five months later, gardens, lawns, trees and shrubs are thirsting for water during this particularly hot and dry summer. Many gardeners seem to think that the 2010 growing season has been three weeks ahead of its normal schedule. Plants that typically follow each other's bloom cycle and provide a changing garden landscape, have been blooming simultaneously and early. Because of the very high temperatures and heat waves this summer, Andover residents have been asked to limit their water use. As a result,



many gardens are dry and lawns are brown. Happily, grass responds to the lack of rain by going dormant and lawns will green up again when rainy weather returns.

During hot summer months, you can conserve water several ways, including: watering only at dawn or after dusk; utilizing rain barrels to collect rain water; avoiding watering on a windy day; maintaining irrigation systems to prevent leaks and waste; watering plants, not pavement; and being sure to add organic material to your soil to help increase its water absorption and moisture retention.

For more cost-effective ways to conserve water year-round in the home and garden, visit the many websites available online, including www.greenscapes.org. You can pick up Greenscapes literature at Memorial Hall Library and Town Offices at 36 Bartlet Street.



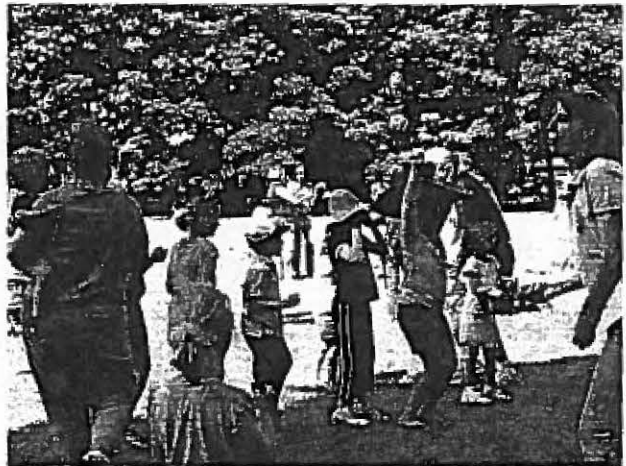
Block Party 2010!

It's Block Party season! BallardVale's annual neighborhood block party will be held on Sunday, September 12th from 12:00 noon – 4:00 pm at the BallardVale playground. Come enjoy hamburgers, hotdogs, Spinners pizza, Cronin's ice cream, and BallardVale Café home-baked treats. Kids and grown-ups can participate in face-painting, activities by Kismet, the Moon Walk (well, maybe only the kids!), egg toss, sack races, tug o war, and other fun. Music and dancing made possible by the ever-popular DJ Ted Teichert!

For newcomers to the area and others who have never been able to attend, the block party is a great way to meet friends and neighbors and enjoy the afternoon outdoors in BallardVale. From its humble "bring potluck" beginnings years ago to its current generously-sponsored version, the block party is a day that kids and families look forward to enjoying.

Sponsors for this year's event include: BallardVale Café, Cronin's Ice Cream, Kismet Wellness Center, Wyeth, Sodexo Food Service, Spinners, and Sunday's General Store.

Food is provided and the suggested cost is \$5 per person/\$25 family cap, but additional donations are always welcome. Contact Diane Huntress at dhuntress@verizon.net to volunteer and to make your donation today!



Meet Patricia Commene

A BallardVale resident joins the roster of candidates hoping to become the next State Representative for the 17th Essex County District this fall, representing the communities of Andover, Tewksbury and Lawrence. Patricia Commene announced her candidacy for State Representative on June 16 at her campaign "kickoff" event, surrounded by her husband Tom, her parents and family, colleagues, neighbors and friends. She described her background and upbringing and the contributing factors to her decision to run.

Pat grew up in Milton, the daughter of an Irish immigrant, who came to the United States at age 18 with forty dollars in his pocket. Her parents worked hard to provide for the family and build a successful life, her father working two full-time jobs and a part-time job, while her mother worked 9-5 before the term "working mother" was used. Pat believes that her parents and her education from the Sisters of St. Joseph provided her with a strong work ethic and the lifelong values of honesty and not tolerating the status quo. She learned that "if you wanted something to change, you had to go out and work to make it happen."

Pat's professional career includes twenty years as a Certified Rehabilitation Counselor working with the Massachusetts Rehabilitation Commission where she has helped hundreds of people with severe disabilities transform their lives and earn a living and enjoy the dignity of work. The clients she most often assists are Veterans and high school students with disabilities.

Pat has lived in BallardVale for the past fourteen years with her husband Tom. Her campaign reflects her upbringing --- it is "bare-bones", grassroots and self-motivated. She depends on volunteers with energy and an interest in working for change. Commene is a

first-time candidate who plans to bring a new outlook to state government. "Listening, partnering, problem-solving and meeting goals" are the signature qualities that Pat brings to any job. She describes herself as even-keeled and able to work with many different people, which is essential for effectiveness. Pat says, "The main reason I'm running for State Representative is because parts of our government are broken. I've seen it from the inside for twenty years and have, on a personal level, tried to initiate change. I've seen waste and inefficiencies that have driven me crazy. As a State Representative, I would insist that each and every state agency take a look --- and then a second look --- at their core mission, and reorganize and restructure to operate more efficiently."

Pat is running against Democratic challenger Frank Bonet from Lawrence, and two Republicans from Andover, Sal Tabit and Paul Adams. Her strong work ethic and years of helping others enter the work force have undoubtedly influenced her choice of motto --- "Working for a Change".

The candidates for State Representative will participate in a forum to be held at Memorial Hall Library on Monday evening, August 30 --- check the local newspaper or the library for the exact time. The primary election will be held on September 14 and the general election on November 2. To learn more about Pat Commene, you can visit her website at www.patcommene.com.

Editor's note: The BallardVale Gazette does not endorse any candidate. Patricia Commene did not ask that an article be published in the Gazette. The Editor is interested in including any newsworthy activities of local residents in issues of the BallardVale Gazette.

BallardVale
Historic District Commission

*Andover Town Offices
36 Bartlet Street
Andover, MA 01810*

US POSTAGE
PAID
ANDOVER, MA
PERMIT NO. 41

***BallardVale Block Party! Sunday, September 12 from
12 – 4pm! See you there...***

Visit <http://andoverma.gov/boards/agendas/bvale.pdf> for the BallardVale Historic District Commission meeting agenda and schedule changes.

CALENDAR

- | | |
|----------------------------|---|
| Sept. 1 (Wednesday) | BallardVale Historic District Commission monthly meeting
Town Offices – 2 nd Floor Conference Room – 7:00 pm |
| Sept. 12 (Sunday) | Annual BallardVale Block Party at the BallardVale playground
12:00 – 4:00 pm |
| Sept. 14 (Tuesday) | Primary Election |
| Oct. 6 (Wednesday) | BallardVale Historic District Commission monthly meeting
Town Offices – 2 nd Floor Conference Room – 7:00 pm |
| Nov. 2 (Tuesday) | General Election |
| Nov. 3 (Wednesday) | BallardVale Historic District Commission monthly meeting
Town Offices – 2 nd Floor Conference Room – 7:00 pm |
| Dec. 1 (Wednesday) | BallardVale Historic District Commission monthly meeting
Town Offices – 2 nd Floor Conference Room – 7:00 pm |
| Jan. 5 (Wednesday) | BallardVale Historic District Commission monthly meeting
Town Offices – 2 nd Floor Conference Room – 7:00 pm |